

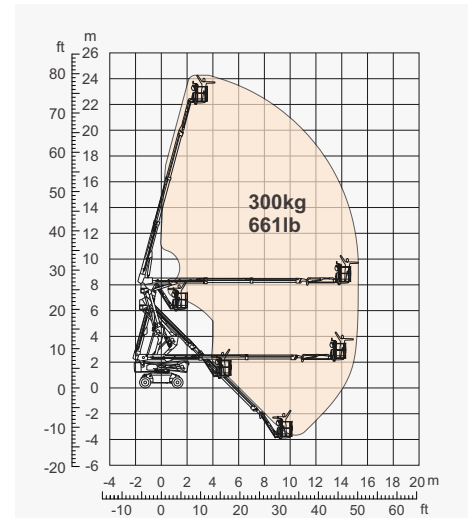
## SPECIFICATIONS

Size	Metric	British
Max. Working Height	24.27m	79ft 7in
Max. Platform Height	22.27m	73ft 1in
Max. Operating Range(+0.6m)	15.29m	50ft 2in
Max. Platform Range	14.69m	48ft 2in
Flatbed Transport Dimensions (L×W×H)	8.80m×2.50m×2.60m	28ft 10in×8ft 2in×8ft 6in
Standard Container Transport	All Applicable	All Applicable
Platform Size(Length×Width)	2.44m×0.91m	8ft×3ft
Turntable Tailswing	0.85m	2ft 9in
Ground Clearance <b>A</b>	0.28m	11in
Wheelbase <b>B</b>	2.50m	8ft 2in
Turning Radius(Inside/Outside)	3.68m/5.54m	12ft 1in/18ft 2in
Tyres	315/55D20	315/55D20
Max. Up And Over Clearance	8.10m	26ft 7in
Max. Down Probing Depth	3.74m	12ft 3in

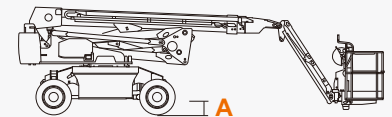
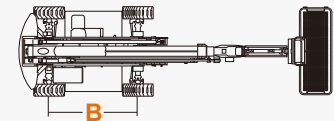
Performance		
S.W.L	300kg	661lb
Max. Occupants	2	2
Gradeability	40%	40%
Travel Speed(Stowed)	6.0km/h	3.7mph
Travel Speed(Raised)	1.1km/h	0.7mph
Max. Working Slope	X-5°/Y-5°	X-5°/Y-5°
Turret Rotation	360° Continuous	360° Continuous
Platform Rotation	180°	180° </td
Jib Movement	132°	132°

Weight		
Overall Weight	12000kg	26455lb

Power		
Range Extended Engine	Kubota Z482/9.8kW	Kubota Z482/9.8kW
Lithium Battery	80V/280Ah	80V/280Ah
Driving Motor	80VDC/30kW	80VDC/30kW
Lifting Motor	80VDC/26kW	80VDC/26kW
Diesel Tank	110L	29gal
Hydraulic Tank	160L	42gal



Range Of Motion



## FEATURES

### Standard Items

- 1.50m (4ft 11in) Jib
- Front Oscillating Axle
- Four-Wheel Steering
- Four-Wheel Drive
- Self-Leveling Platform
- 180° Left And Right Swing Platform
- Proportional Joystick Controls
- Thumb Rocker Steer
- Drive Enable
- Ac Power Cord To Platform
- Tilt Alarm
- Descent Alarm
- Flash
- Horn
- Hour Meter
- Integral Integrated Special Drive Axle  
For Construction Machinery
- 360° Continuous Turntable Rotation
- Positive Traction Four Wheel Drive
- Platform Load Sense System
- Fault Diagnosis System
- Operator Anti-crushing Protection System
- Harsh Environment Kits
- 12V DC Auxiliary Power



Articulated  
Boom-BA



Working  
Height-24m



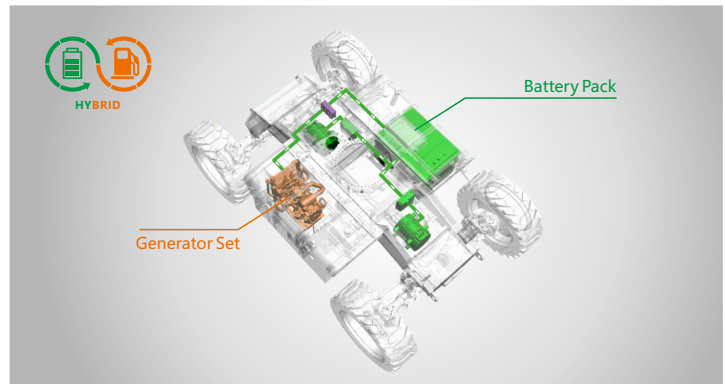
Jib



Hybrid-H



Rough  
Terrain-RT



Hybrid-Super Long Endurance Of 30 Days

### ZHEJIANG DINGLI MACHINERY CO., LTD.

Address: No.188 Qihang Road,Deqing,Zhejiang P.R.C 313219

Telephone: +86(572)8681688

E-Mail: export@cndingli.com

Https://en.cndingli.com

Due to continuous technology updates, technical parameters are subject to change without notice. This picture book is for reference only, the actual product shall prevail. The copyright is owned by zhejiang dingli, any content may not be copied for any purpose without written permission.

2024-06

